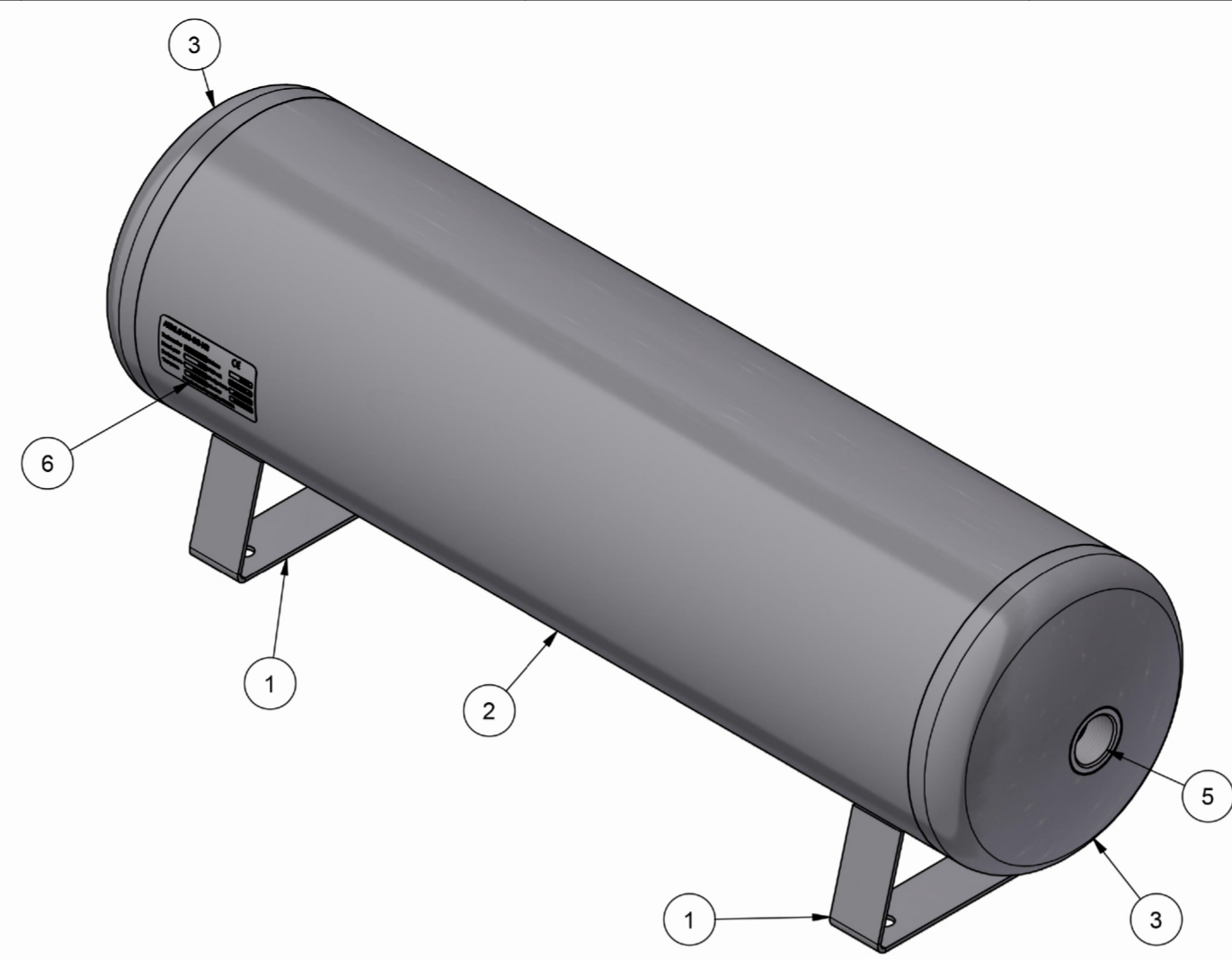
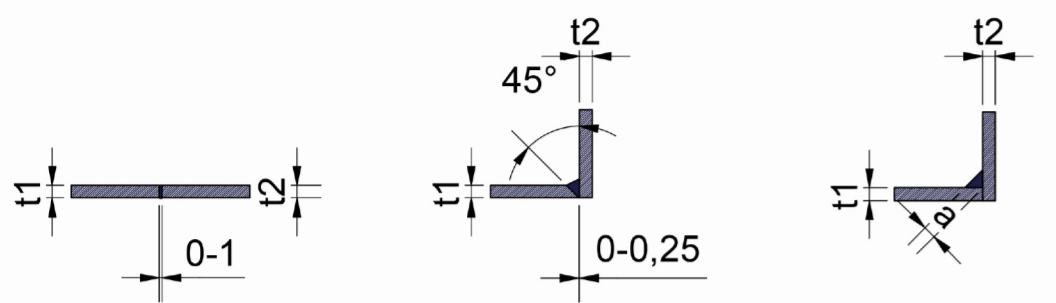


Mark	Nozzle	Size	Rating	Type/Facing	Norm
N1	Inlet	3/4"	PN16	Half coupling BSP (F) ISO228	EN10272
N2	Outlet	3/4"	PN16	Half coupling BSP (F) ISO228	EN10272
N3	Drain	1/4"	PN16	Half coupling BSP (F) ISO228	EN10272

Weld detail
W1-13339
Butt weld

Weld detail
W2-13339
Set-in flush nozzle

Weld detail
W3-13339
Fillet weld



DESIGN DATA		
Design code		EN13445:2021 (Issue 1:2021)
PED 2014/68/EU		Cat. I, mod. A
PED phase / group		Gas / group II
Testing group		4
Medium		Air / inert gasses
Joint efficiency		0.7
Joint examination		N.A.
Cyclic loads		N.A.
Insulation		N.A.
Design pressure	Bar(g)	0 ÷ 16
Operating pressure	Bar(g)	16
Hydrostatic test	Bar(g)	38.5
Design temperature	°C	-10 ÷ 100
Operating temperature	°C	TBD
Corrosion allowance		0
Capacity	Ltr.	10.00
Weight empty	kg	± 4.85
Weight test full	kg	± 14.85

ATNL0100-SS-X8 CE

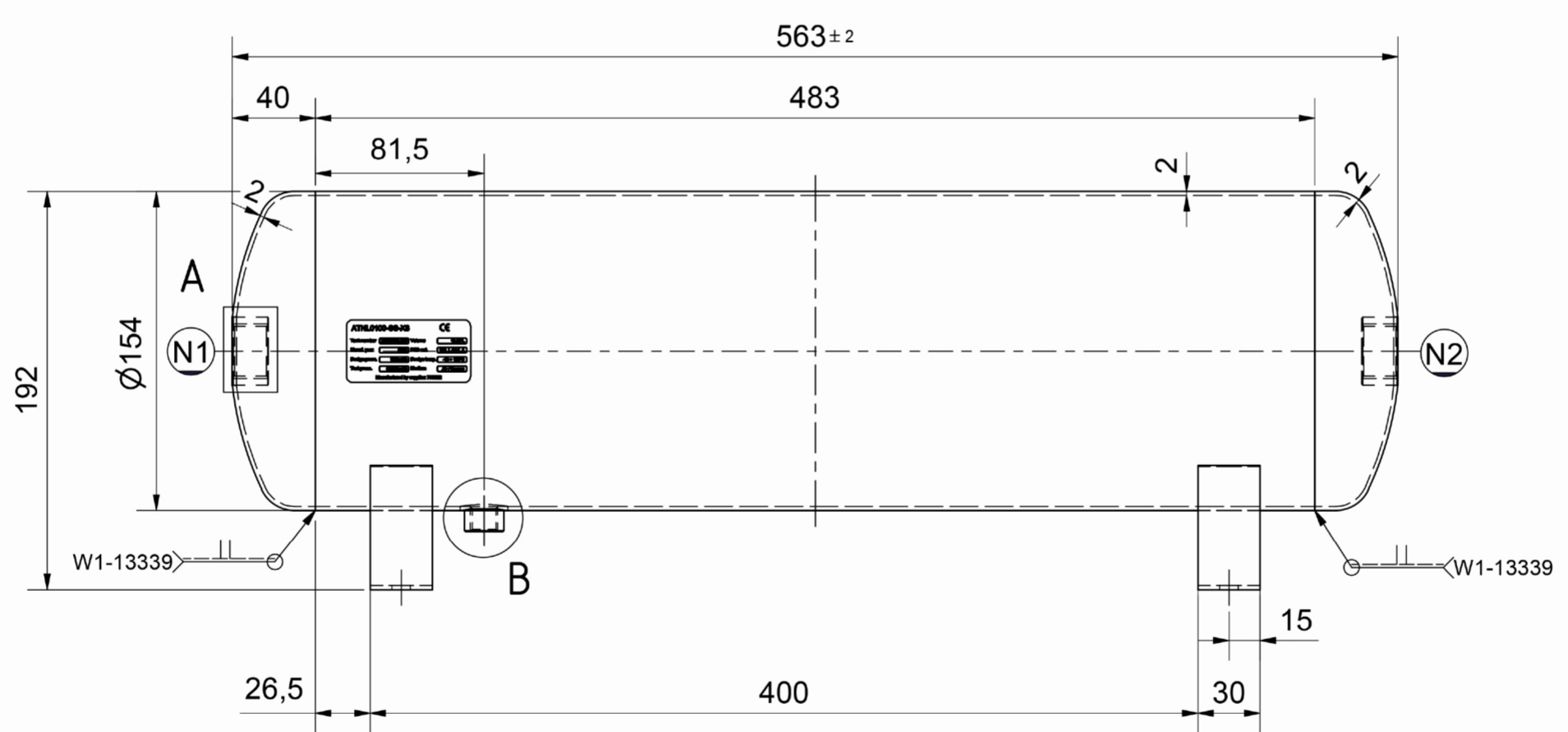
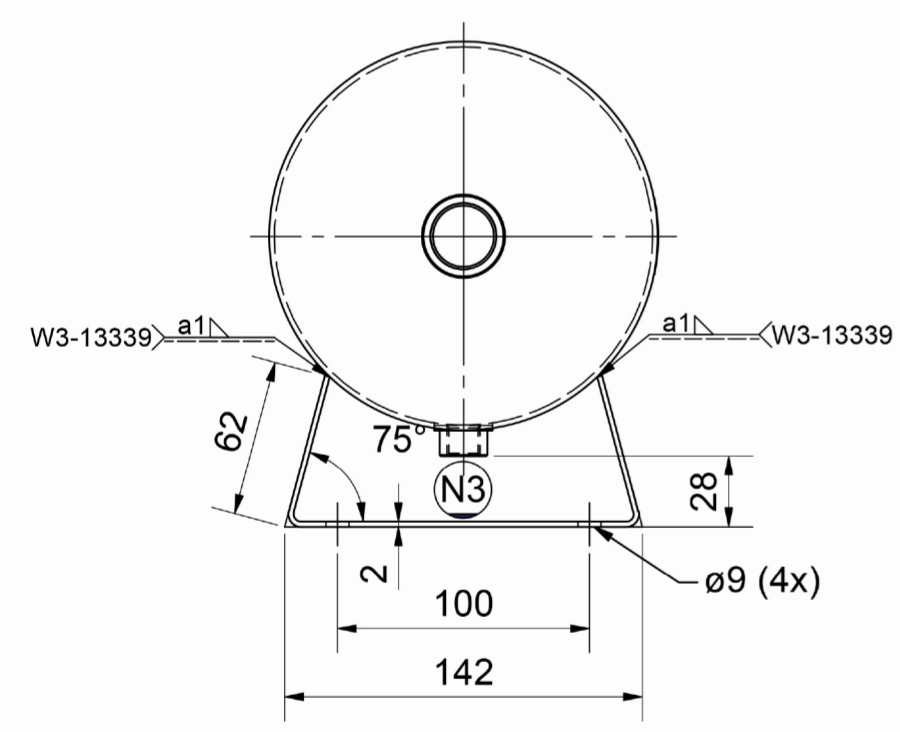
Tank number Volume

Manuf. year PED cat.

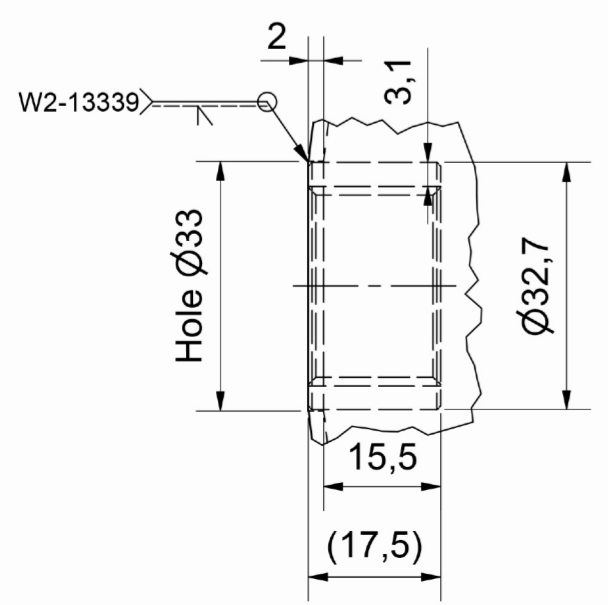
Design press. Design temp.

Test press. Medium

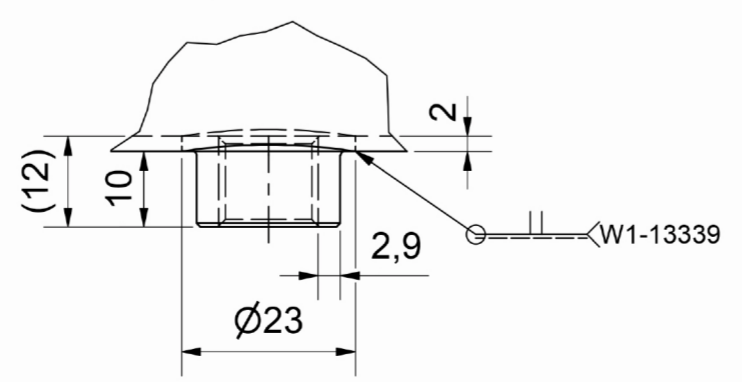
Manufactured by supplier: 760022



A (1:1)
Nozzle N1 & N2



B (1:1)



Material: 1.4301 / 1.4307
Finish: Pickling and glass bead blasting

Scale: 1:3	Comments	Art.nr.:
Designer:		Weight: 4,859 kg
Date:		
ATNL0100-SS-X8		Ruwheld volgens NEN 3634 Maattoleranties volgens NEN-ISO 406 Vorm en plaatoleranties volgens NEN-ISO 1101
	INTER-TECHNICS B.V. De Sleutel 11 5652 AS Eindhoven +31 (0)88 110 9000 info@intertechnics.nl www.intertechnics.nl	Size: A2 Partnumber: -