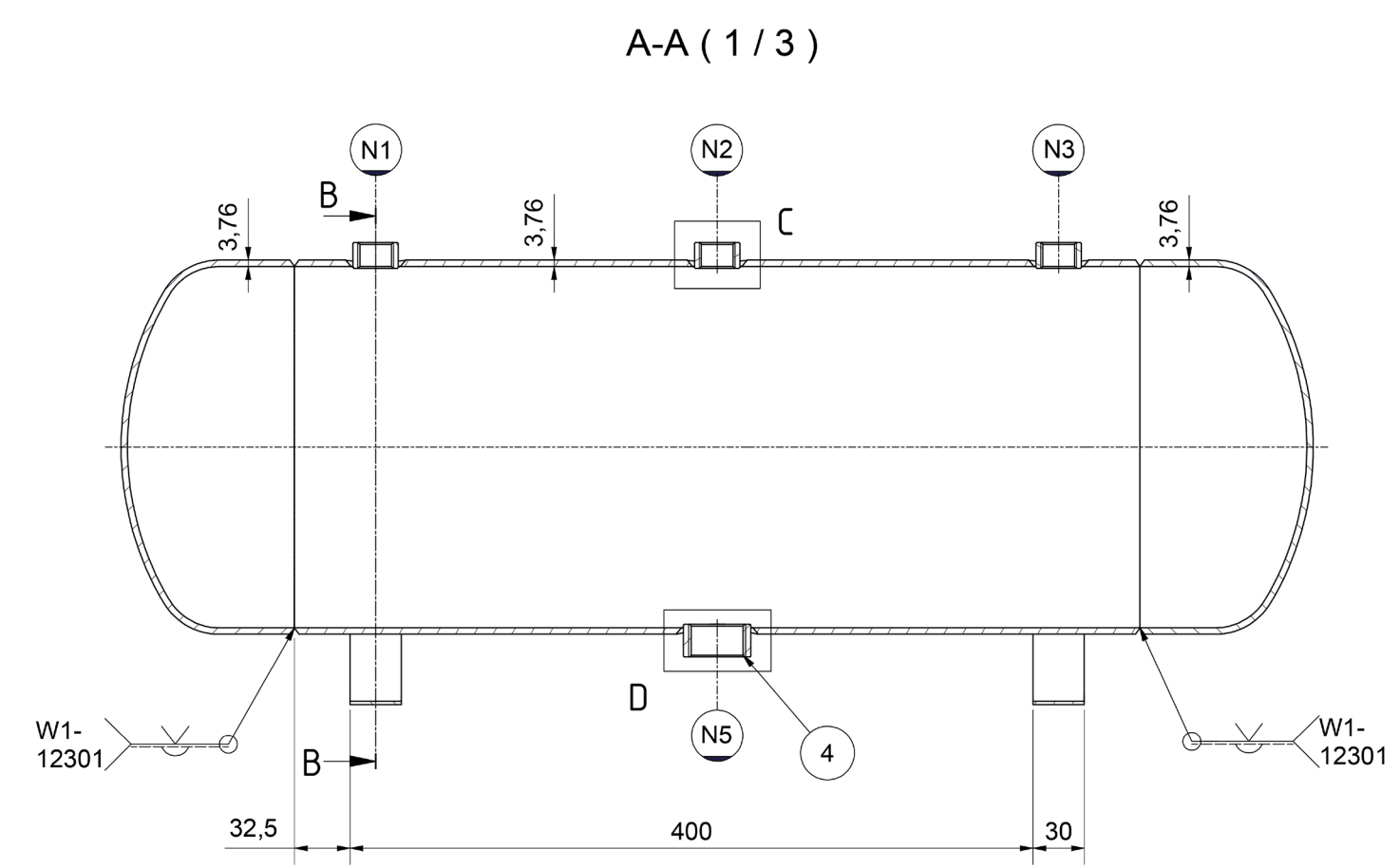
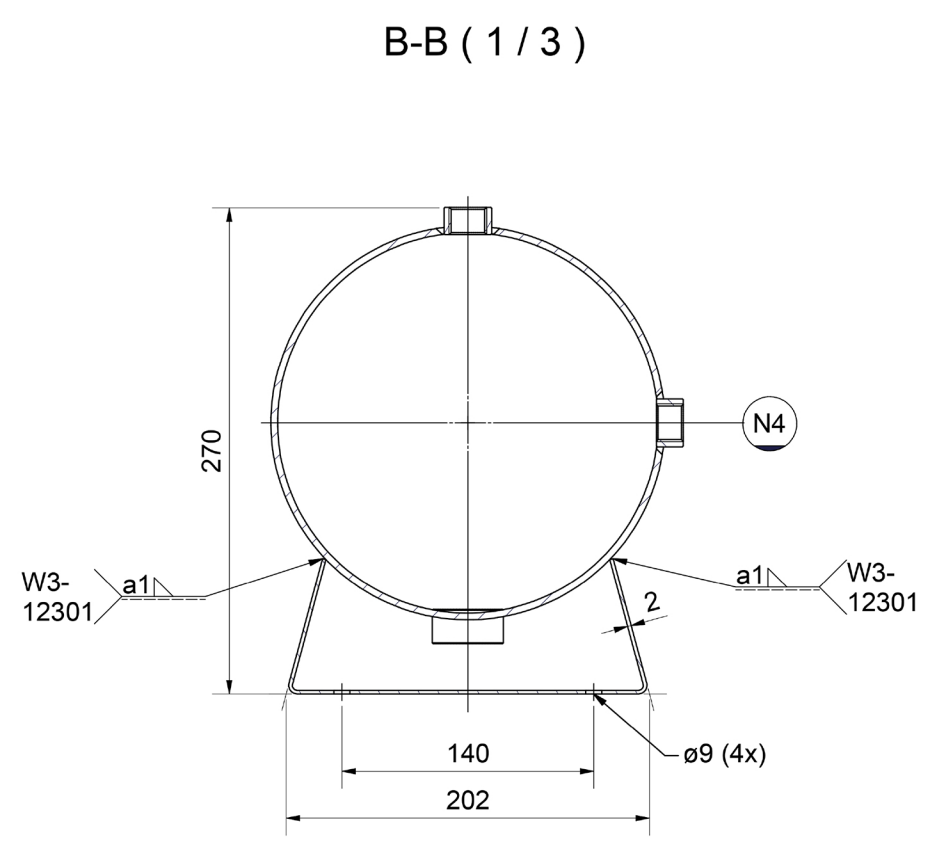
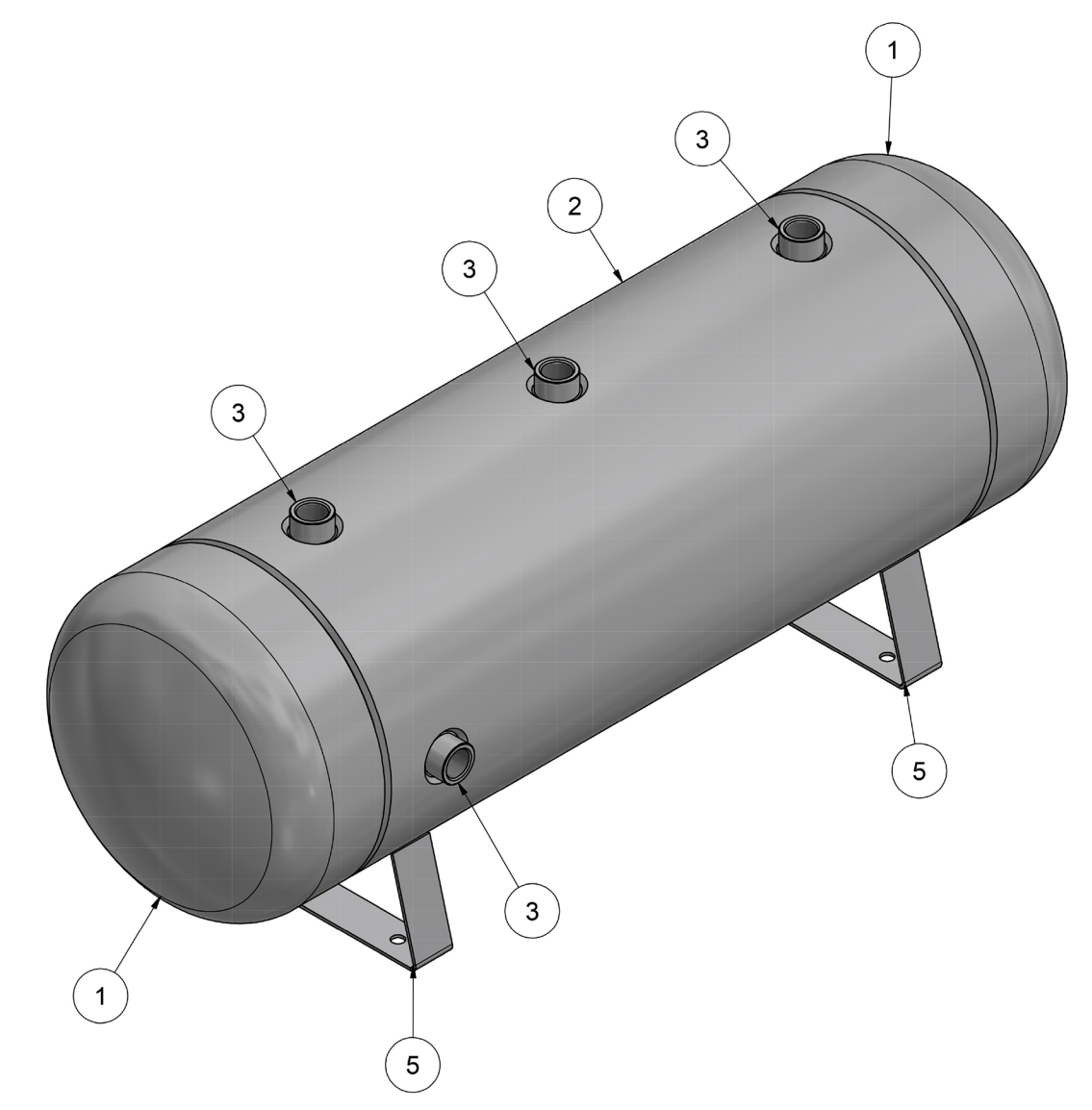
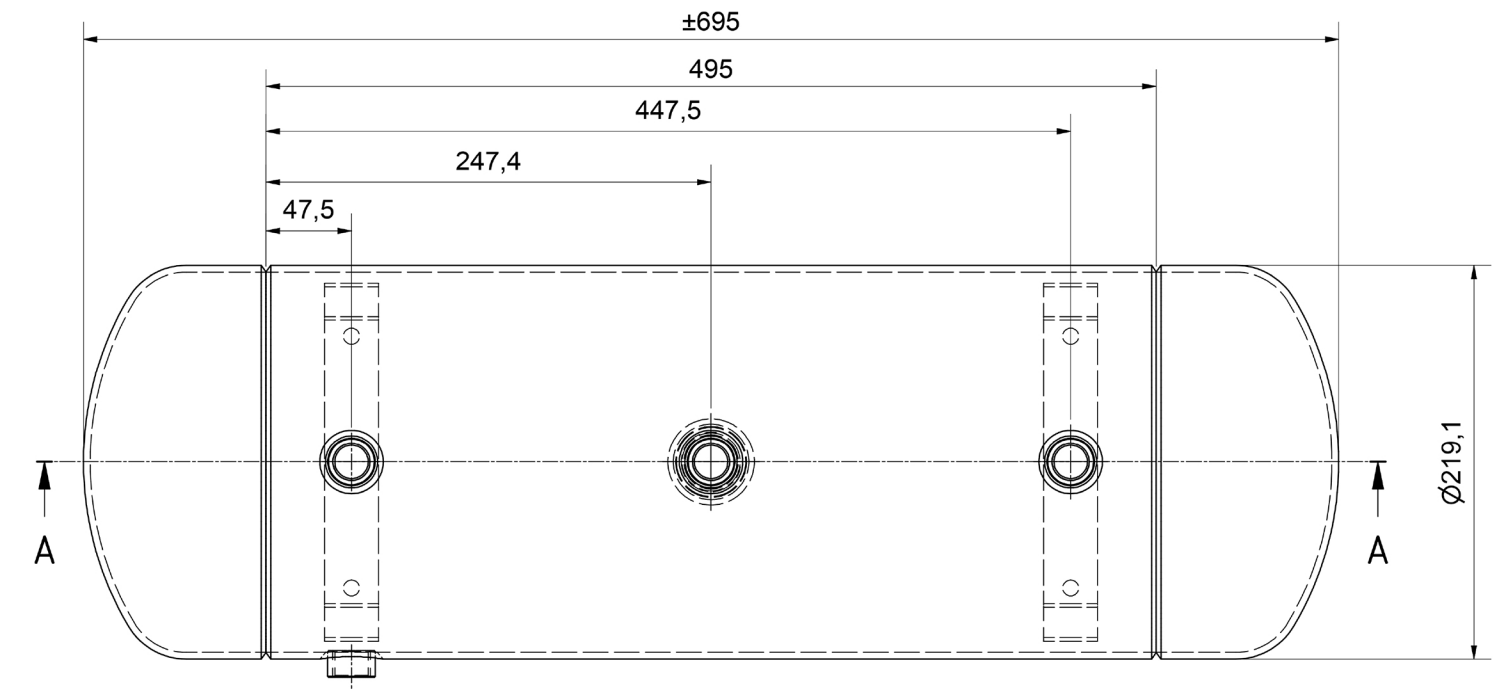
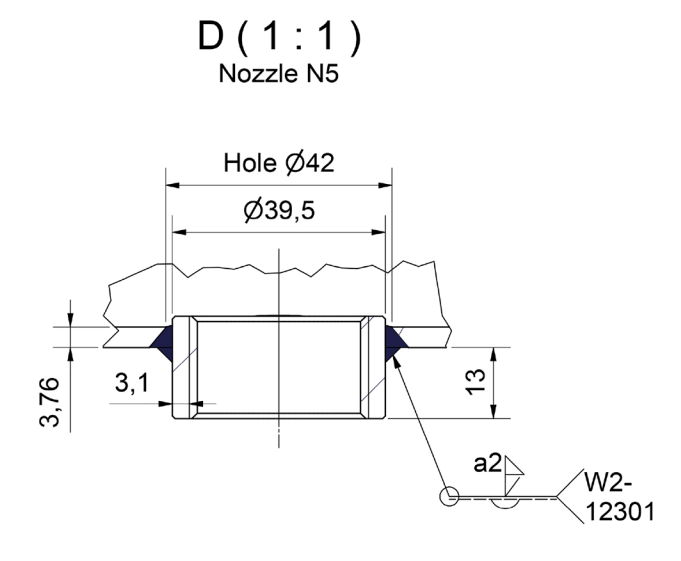
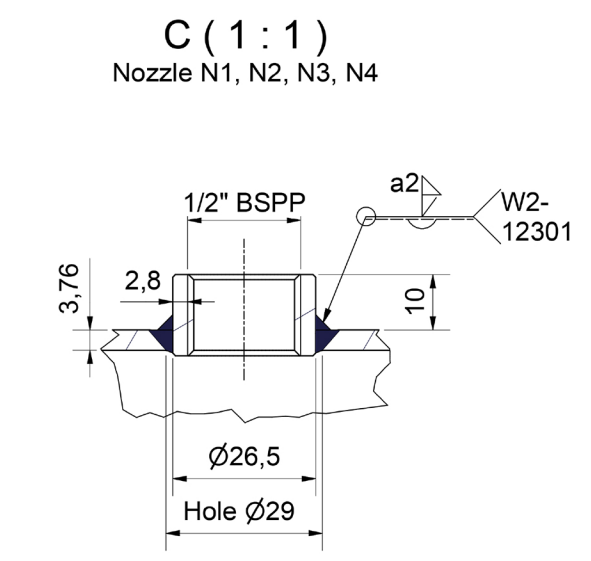
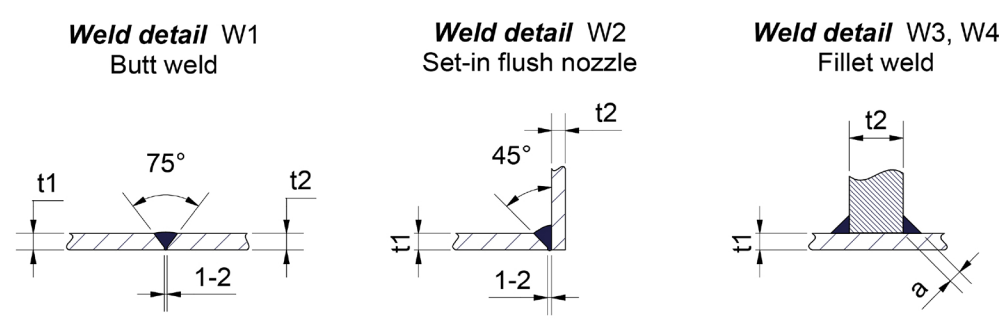


Mark	Nozzle	Size	Rating	Type/Facing	Norm
N1	Drain port	1/2" BSPP	SCH 40S	ISO228-1G	ASME 16.9 / SA-312
N2	Drain port	1/2" BSPP	SCH 40S	ISO228-1G	ASME 16.9 / SA-312
N3	Drain port	1/2" BSPP	SCH 40S	ISO228-1G	ASME 16.9 / SA-312
N4	Drain port	1/2" BSPP	SCH 40S	ISO228-1G	ASME 16.9 / SA-312
N5	Drain port	1" BSPP	SCH 40S	ISO228-1G	ASME 16.9 / SA-312

DESIGN DATA		
Description	unit	Values
Design code		ASME VIII Div 1 2019
PED 2014/68/EU		Category II, mod. A2
Medium		Air / inert gasses
Capacity	Ltr.	±25
Design pressure	Bar(g)	0 + 16
Operating pressure	Bar(g)	10
Hydrostatic test	Bar(g)	24.2
Design temperature	°C	-10 + 100
Corrosion allowance		0
Joint efficiency		0.7
Joint examination (RT)		None
Heat treatment		N.A.
Insulation		N.A.
Weight empty	kg	15
Weight full test	kg	40



Finish: Pickling and Passivated
All materials including 3.1 certificate

ITEM	QTY	TITLE	SIZE	NORM	MATERIAL	PART NUMBER
5	2	Bracket	200x30 s=2	ASME SA-240	TP304L	26556
4	1	Half coupling	1" BSPP H=19	SA-312 / ISO228-1G	TP304L	-
3	4	Half coupling	1/2" BSPP H=15	SA-312 / ISO228-1G	TP304L	-
2	1	Tube	ø219.08x3.76 L=495	ASME B36.9 / SA-312	TP304L	-
1	2	Cap	ø219.08x3.76 H=101.6	ASME B16.9 / SA-403	WP304L-S	-

Scale: 1:4
Designer:
Date:

Comments: Art.nr.:
Weight: 15,046 kg

ATNL0250-SS-X5

Finish: Pickling and Passivated
All materials including 3.1 certificate

Inter-Technics B.V.
Die Sleutel 11
5852 AS Eindhoven
+31 (0)85 110 9000
info@intertechnics.nl
www.intertechnics.nl

Size: A1
Partnumber: -