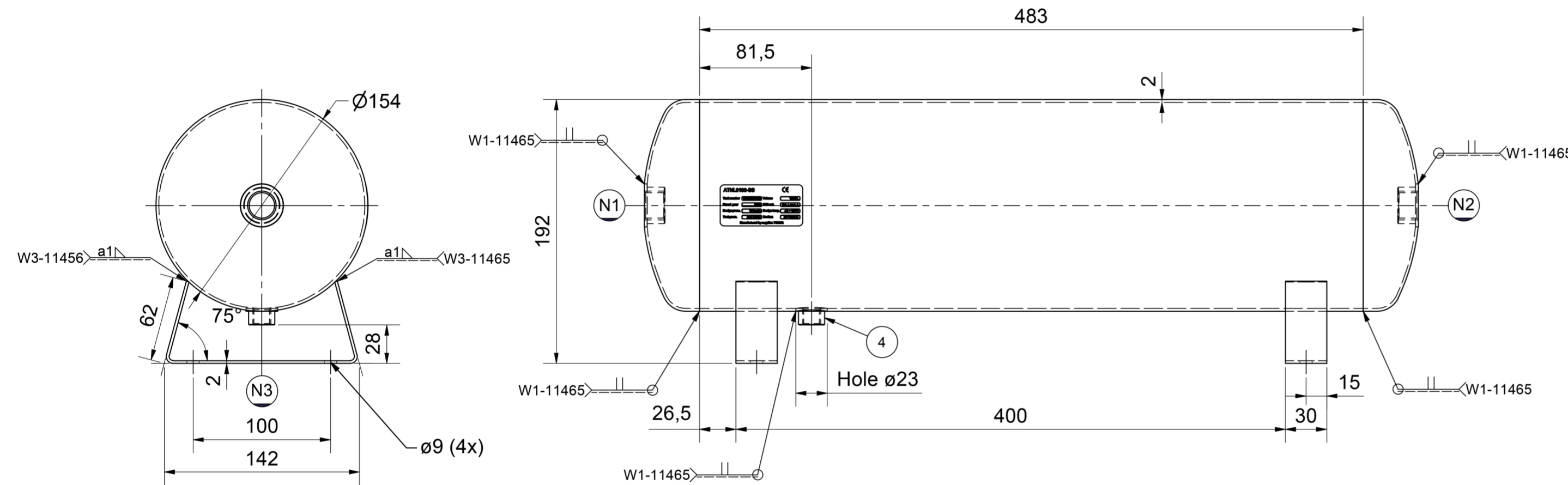
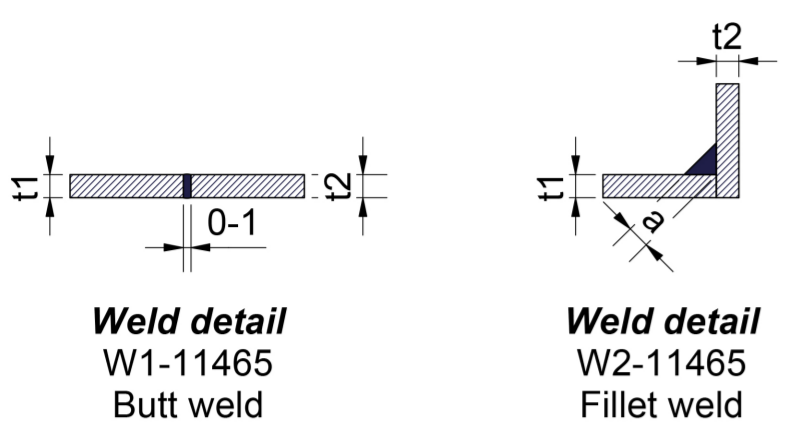


Mark	Nozzle	Size	Rating	Type/Facing	Norm
N1	Inlet	1/2"	PN16	BSP (F) ISO228	EN10272
N2	Outlet	1/2"	PN16	BSP (F) ISO228	EN10272
N3	Drain	1/4"	PN16	BSP (F) ISO228	EN10272

DESIGN DATA		
Design code		EN13445:2021 (Issue 1:2021)
PED 2014/68/EU		Cat. I, mod. A
PED phase / group		Gas / group II
Testing group		3b
Medium		Air / inert gasses
Density	kg/m3	1.33
Joint efficiency		0.85
Joint examination		RT=5% on circumferential PT=10% on nozzles (first 2 pcs. of every badge)
Cyclic loads		N.A.
Insulation		N.A.
Design pressure	Bar(g)	-1 ÷ 16
Operating pressure	Bar(g)	0 ÷ 15
Hydrostatic test	Bar(g)	25.5
Design temperature	°C	-10 ÷ 100
Operating temperature	°C	0 ÷ 90
Corrosion allowance		0
Capacity	Ltr.	10.00
Weight empty	kg	± 4.85
Weight test full	kg	± 14.85



ATNL0100-SS CE

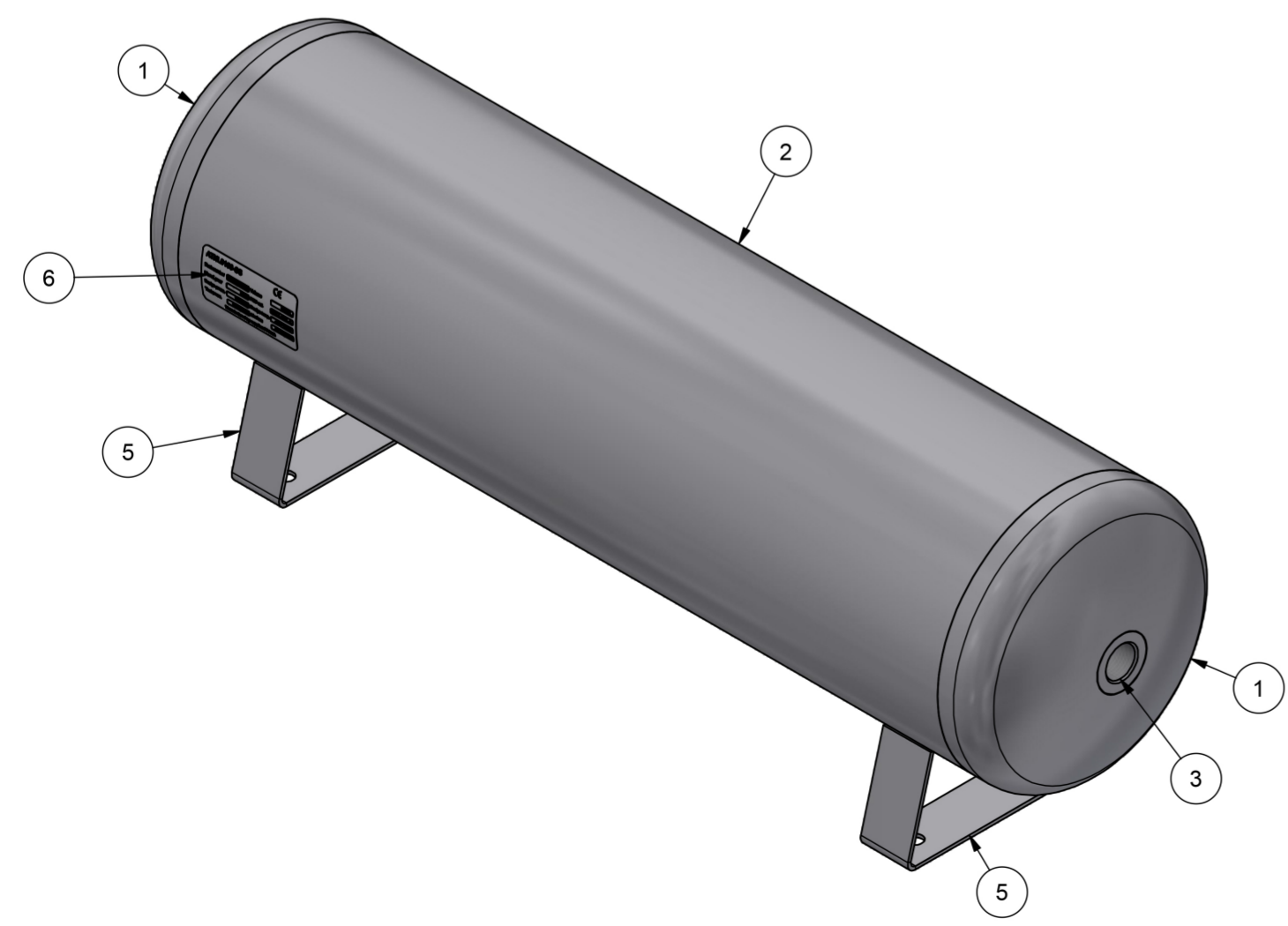
Tank number: **220XXXX-000** Volume: **10.00 L**

Manuf. year: **2022** PED cat.: **Cat. I, mod. A**

Design press.: **16 Bar(g)** Design temp.: **-10 + 100°C**

Test press.: **25.5 Bar(g)** Medium: **Air / Oxygen**

Manufactured by supplier: 760022



Material: 1.4301 / 1.4307
Finish: Pickling and glass bead blasting

Scale: 1:2	Comments		
Designer:		Art.nr.:	
Date: 3-10-2022		Weight: N/A	
ATNL0100-SS		Ruwheid volgens NEN 3634	
		Maattoleranties volgens NEN-ISO 406	
		Vorm en plaatstoleranties volgens NEN-ISO 1101	
INTER-TECHNICS B.V. De Sleutel 11 5652 AS Eindhoven +31 (0)88 110 9000 info@intertechnics.nl www.intertechnics.nl		Size: A2	Partnumber: -